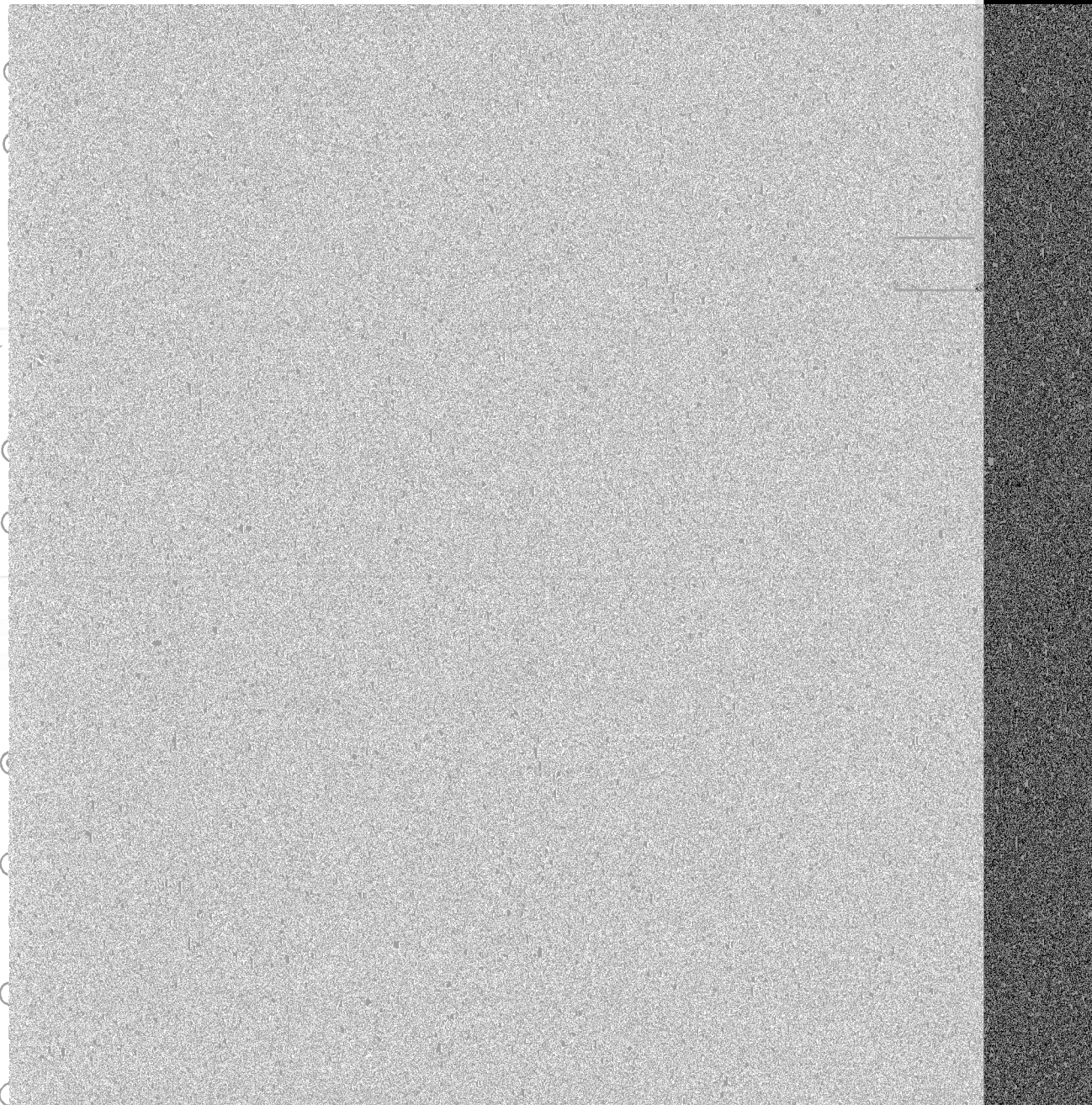
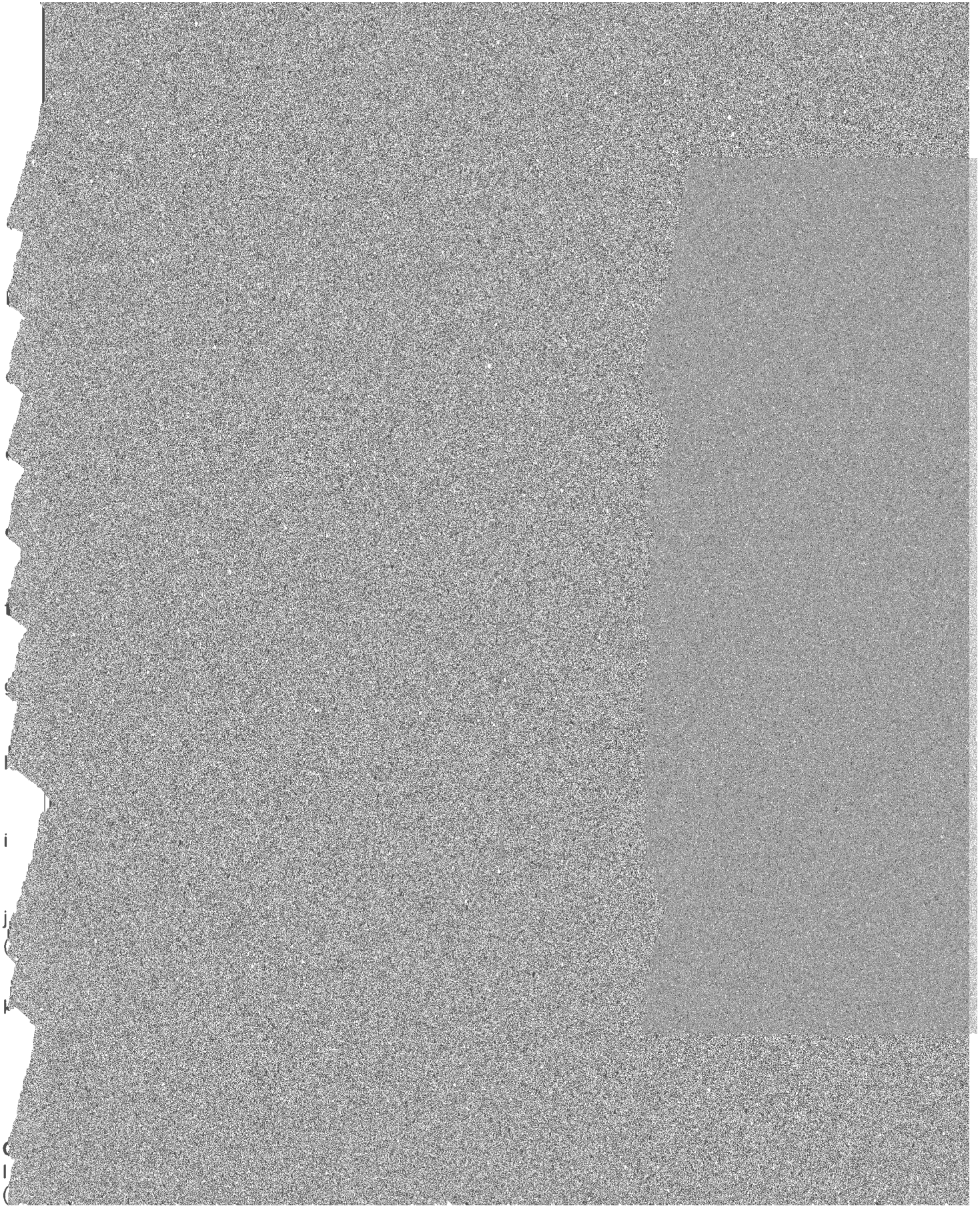


Page 12

1997-1998

...







# Crimin

Of those c

On-campu

Criminal o

a.

b. Mansla

c. Rape

d. Fondling

e. Incest

f. Statutory

g. Robbery

h. Aggrava

i. Burglary

j. Motor ve

(Do not inc



[ ]

)] [ ]

[ ] [ ]

)] [

] ]

)] [

[ ]

]

e. Incest

f. Statutory rape

g. Robbery

h. Aggravated assault

i. Burglary

j. Motor vehicle theft

(Do not include theft *from* a motor vehicle)

k. Arson

**Caveat:**

If you have changed prior years' data, you must add a caveat explaining the change (YEAR), Line (X) was changed from (A) to (B) because (REASON).

## Hate Crimes - On campus

For the criminal offenses listed below, first enter the total number of occurrences that occurred On campus. Then break down each total by category of bias (e.g., race, religion, sex, sexual orientation).

YEAR 2023

**Criminal offense**

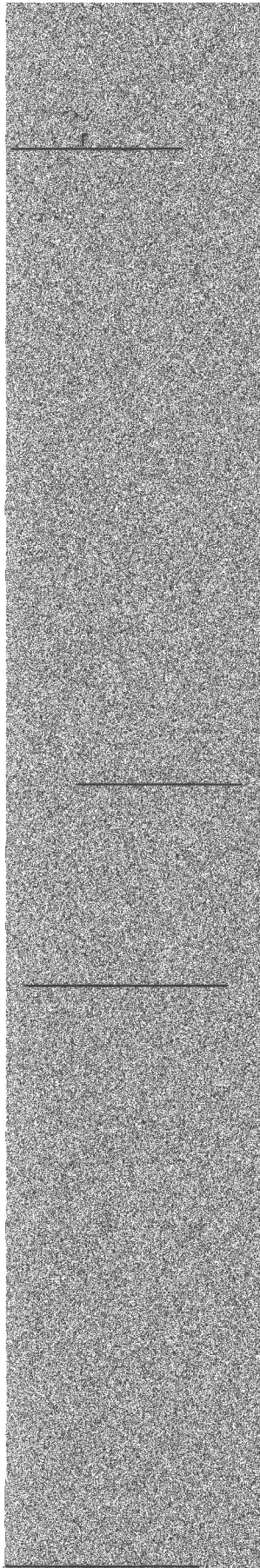
**Total**

**Occurrences**

**Race**

**Religion**

**Sex  
orientation**



vandalism of property.







0	0	0	0	0	0	0	0	0
0	0	0	0	0	0	0	0	0
0	0	0	0	0	0	0	0	0

I

II

0

0

0

0

0

0

(Do not include theft from a motor vehicle)

0

0

0

0

0

\_\_\_\_\_

YEAR 2022

0

Murder

manslaughter

c. Rape

d. Force

e. Incest

f. Statutory

g. Robbery

h. Aggravated

i. Burglary

j. Motor Vehicle

k. Arson

l. Simple

m. Larceny

n. Intimidation

o

Destruction

vandalism

**Criminal**







i.

j.

k.

l.

m.

n.

o.

De

va

Cri

a.

Mu

ma

c. E

d. E

e. l



f. Statute

g. Robbery

h. Aggravated

i. Burglary

j. Motor

k. Arson

l. Simple

m. Larceny

n. Intimidation

o. Destruction

vandalism

**Criminal**

a. Murder/

manslaughter

c. Rape



d. E

e. L

f. S

g. F

h. A

i. B

j. M

k. A

l. S

m. L

n. L

o.

Des

van

**Cav**

If yo

(YE

# Hate Crimes - Public Property

For the criminal offenses listed below, first enter the total number of Hate Crimes on Public Property. Then break down each total by category of bias (e.g., race,

Criminal offense	Total	Occurrences of Hate crimes			
		Race	Religion	Sexual orientation	Gender

a. Murder/ Non-negligent manslaughter

c. Rape

d. Fondling

e. Incest

f. Statutory rape

g. Robbery

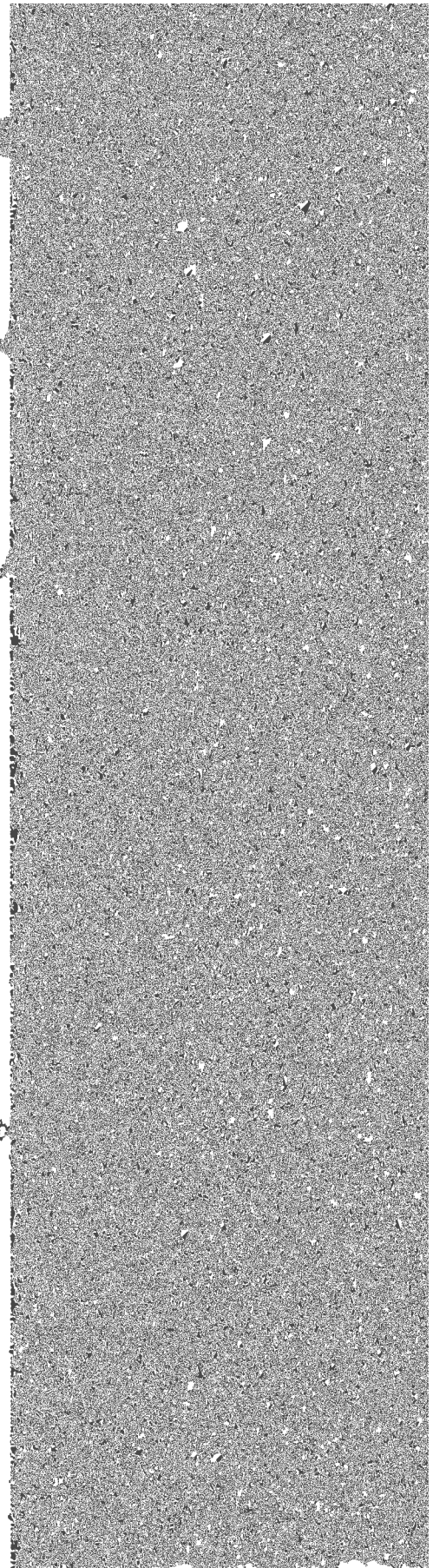
h. Aggravated assault

i. Burglary

j. Motor vehicle theft

le

k. Arson











a.

b.

c.

**Ca**  
If y  
(YE

**VA**

For

Crit

a. D

b. D

c. S

**Cave**  
If yo  
(YEA





a. Domestic violence

b. Dating violence

c. Stalking

**Caveat:**

If you have changed pr  
(YEAR), Line (X) was ch

## Arrests - On c

Enter the number of Arr

Crime

a. Weapons: carrying, p

b. Drug abuse violations

c. Liquor law violations

**Please Note:** Do NOT





We

{

}]

}

We

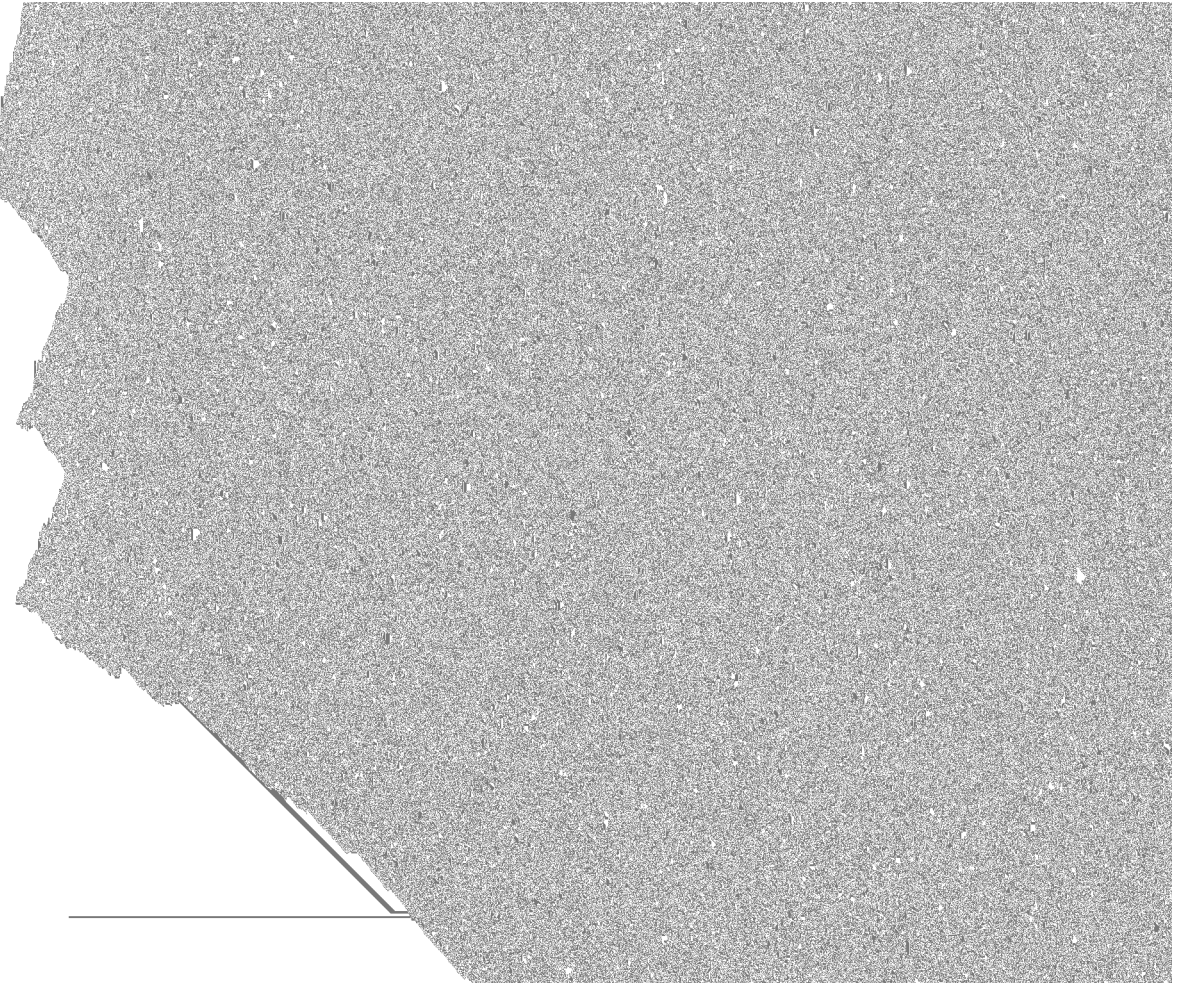
{

}]

}

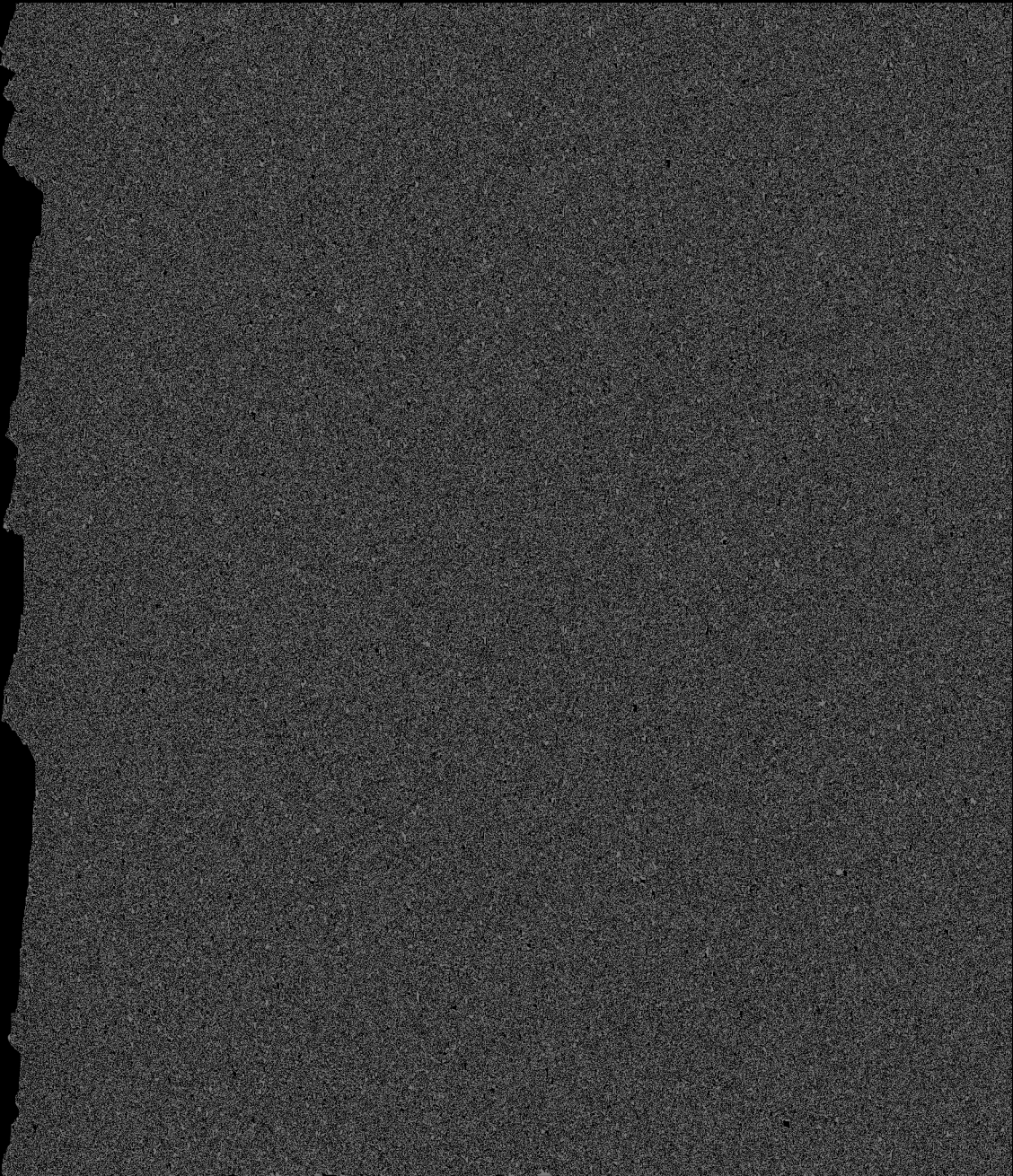
[ ( [ 0 ] ] [ ]

Do not inclu  
If the discip



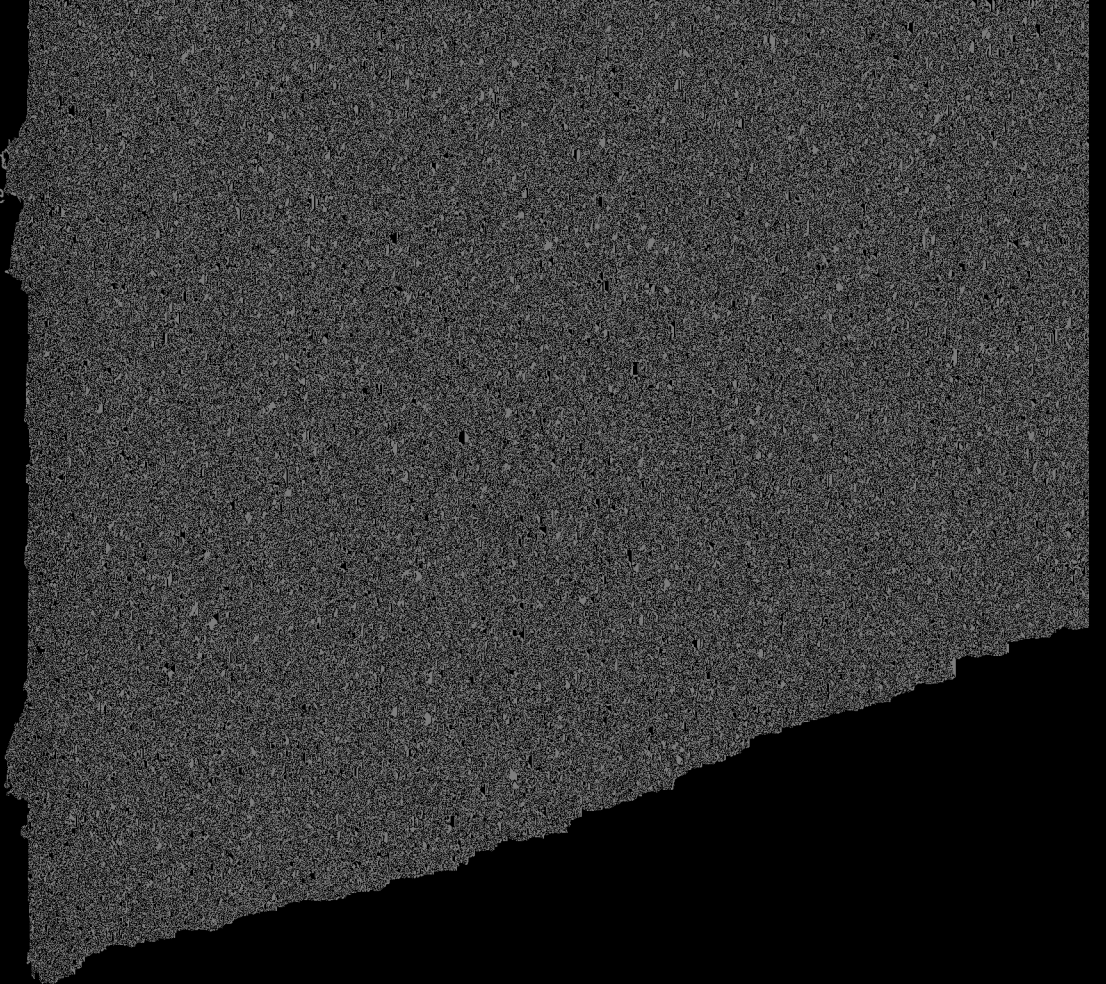
[

Do not include d  
If the disciplinar





ot include disciplinary act  
disciplinary action is the



Do not include disciplinary actions that  
if the disciplinary action is the result of

The total number of unfounded crimes,  
violence, or stalking incidents that have

